

PRODUCT GUIDE

Superb for Home, Work, Business and Industrial applications



Taiwan Shuttle Headquarters

No. 30, Lane 76, Rui-Guang Rd.,
Nei-Hu Dist., Taipei City, Taiwan
TEL: +886-2-8792-6168
FAX: +886-2-8792-6268
<http://global.shuttle.com>
SALES E-MAIL: sales@tw.shuttle.com
MEDIA CONTACT: shuttlepr@tw.shuttle.com

USA Shuttle Computer Group INC.

17068 Evergreen Place, City of Industry,
CA 91745
TEL: +1-626-820-9000
FAX: +1-626-820-5060
<http://us.shuttle.com>
SALES E-MAIL: sales@us.shuttle.com

Germany Shuttle Computer Handels GES. M.B.H.

Fritz-Strassmann Str. 5, D-25337 Elmshorn,
Germany
TEL: +49-4121-476860
FAX: +49-4121-476900
<http://eu.shuttle.com>
SALES E-MAIL: sales@shuttle.eu

Japan Japan Shuttle Co., Ltd

2F Murakami Bldg., 1-8-3 Ojima Koto-ku
Tokyo, 136-0072 Japan
TEL: +81-3-5625-1670
FAX: +81-3-5625-1673
<http://jp.shuttle.com>
SALES E-MAIL: sales@shuttle-japan.jp

China Shuttle Commerce (Shenzhen) Ltd.

23L2, Baofa Building, Shenyang Road, Shatoujiao,
Yantian District, Shenzhen City, China
TEL: +86-755-3322-2966
<http://cn.shuttle.com>
SALES E-MAIL: salescn@cn.shuttle.com

Shuttle®

XPC

| NANO | SLIM | CUBE | ALL IN ONE



COMPANY PROFILE

From its humble beginning in 1983 as a motherboard manufacturer, Shuttle has been devoted to innovating PC products over the years. In 2001, Shuttle built its reputation as the creator of the world's first Small-form-factor (SFF) computers, and received the global success with its XPC brand. Today, Shuttle's product development has broadened to consist of hardware and software-integrated solutions, including Mini PCs, Notebook PCs, Face Recognition, Smart Long-Term Care, and is actively targeting deployments at cloud computing and IOT applications for vertical business market.

Based upon 35 years of experience in PC technology, Shuttle is now a SFF PC market leader that offers a complete line of computer solutions, including XPC Cube (13L), XPC Slim (3L/1.3L), XPC Nano (>1.3L) and XPC All-in-One PCs. With unique features of silent cooling, energy efficiency, long-term operation and broad temperature spectrum, Shuttle PCs are widely being used for full digital signage applications such as digital advertising, digital menu boards, self-service kiosks and POS systems.

Headquartered in Taiwan, Shuttle has subsidiary offices located throughout the United States, Germany, Japan and China, and has established distribution channels in more than 30 countries and regions. Shuttle is a multinational company providing best-in-class sales and services for customers around the world.



AREAS OF APPLICATION



DIGITAL SIGNAGE

Whether it's in retail, catering, healthcare, banking or other public areas, Shuttle supplies the right player for product presentations, promotional videos and information release in every scenario. Choosing a platform with reliable, proven technology is as important as choosing its software system. With ranges of single, multiple and large-scale display options, Shuttle Mini-PCs enable productivity around industrial-grade performance at a compelling price.

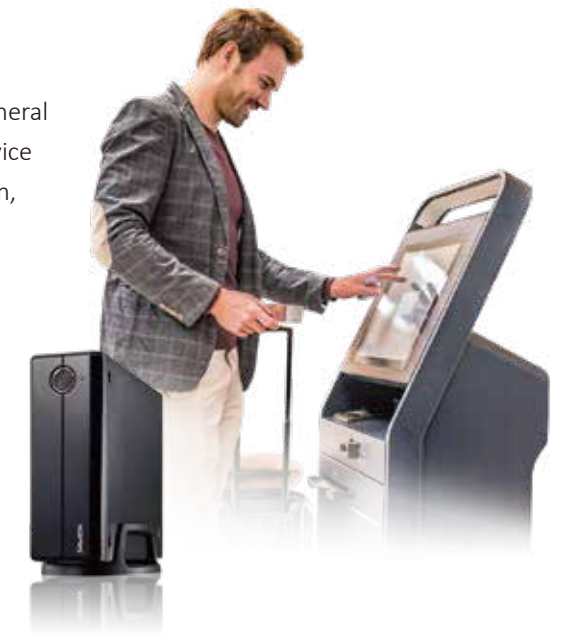
POS

Running a store is not just about enthusiasm, and it is important to choose a POS system that supports every aspect of your daily operations. Shuttle's AIO PC adds advantages of broad temperature tolerance, plus IP54 dust and waterproofing to meet maximum stability for 24/7 operational requirements; it's the right choice for your POS deployment.



KIOSK

Under the expansion of network and peripheral technologies, today's kiosks have become a service platform involves multimedia and information, even become a part of sales channel to serve as vending, self-checkout lanes and e-ticketing. With its silent cooling design, every Shuttle model is certified by 24/7 operation. Thanks to the compact size that fits in limited spaces, plus added features such as broad temperature tolerances and rich peripheral interfaces, making it ideal for system integration in kiosks – even an 8-port configuration in such tiny machine is possible.



WORKSTATION

Modern workstations don't need to be big, bulky machines, but can be compact devices without compromising performance. Shuttle's Cube PCs come with a 13-liter stylish chassis that provide strong expansion capability, storage capacity and large-format graphics support to tailor your specific needs. Thanks to the exclusive I.C.E.2 cooling technology, these machines remain stable and run extremely quiet for 24/7 operations. With a high level of capability and flexibility, who needs a traditional tower PC anyway?



OFFICE

A Mini-PC is smaller than a traditional tower but with the same expandable capacity. That means a space-saving system can save valuable room on your desk. As a SFF PC market leader, Shuttle offers full mini-PC solutions across a wide choice of processors, storage capabilities, I/O connectivity as well as silent cooling design to perfect your work efficiency. Whatever your requirements, we have the right model for you.

XH310R/XH310RV

AFFORDABLE 3-LITER PC WITH SCALABILITY FOR DIVERSE APPLICATIONS

The compact, versatile XH310R series is the latest addition to our 3-liter family with performance that's scalable to meet your needs. With a height of just 7.8 cm, the model supports the newest Intel 9th gen processors, up to 32 GB of DDR4, 2x GigaLAN, HDMI 2.0a, DisplayPort, VGA, RS232, space for two hard drives and an NVMe SSD as well as expansion possibilities for WLAN and more. Also, for storage requirements, users have the option to create a three-drive space by replacing the ODD. The series sets itself apart from other models, does fear no challenge in serving as Office PC, Signage Player, Kiosk Player, Surveillance Client or any other situation.



FEATURES

- Supports Intel® 8/9th gen processor family
- Flexible display support via HDMI 2.0a, DP and VGA
- Slim ODD bay for three 2.5" SSD/HDD or one 3.5" HDD
- Two M.2, two RS232, four USB 3.1 Gen 1, four USB 2.0 and dual LAN
- 24/7 certified in 0-50°C environments
- Optional 12V DC input available

ACCESSORIES

PCM31

TRIPLE COM EXPANSION KIT FOR XPC SLIM

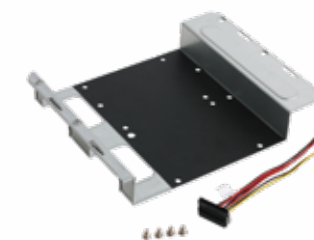
The PCM31 provides three additional RS232 to the front panel, allowing for a Shuttle slim model to support a max of five serial ports to connect peripheral devices.



PHD4

3.5" HARD DRIVE RACK FOR 3-LITER PCs

The PHD4 allows for installation one 3.5" hard drive for 3-liter slim PCs (except XH61V/XG41). No other drives (i.e. DVD drive or 2.5" HDD/SSD) can be used while PHD4 is in use.



WLN-M

WLAN-AC / BLUETOOTH COMBO KIT

The kit includes a M.2 2230 card, two antennas and cables, which supports 802.11ac/b/g/n WLAN and Bluetooth 4.0 as well.



PS01

VERTICAL STAND FOR 3-LITER PCs

The stand is designed for 3-liter slim PCs, providing maximized stability when placing the model in the vertical position.



PV02

VESA MOUNT

Designed for 3-liter slim PCs, the VESA mount allows for installation on to walls or monitors which provides space savings and the flexibility for diverse applications.

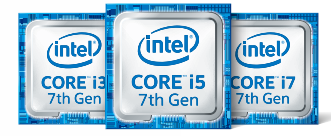


XH110G

POWERFUL 3-LITER PC PACKS

STRONG EXPANDABILITY

Equipped with Intel® 6th/7th Gen Skylake and Kaby Lake-Based Processors, the XH110G represents an excellent combination of performance and expandability in a compact design. Thanks to its PCI-Ex16 slot, the XH110G is able to install various add-on cards such as multi-display card, video capture card, graphics card or more for professional applications. The XH110G is also noteworthy for its feature-rich connectivity; it provides six USB 2.0, two USB 3.1 Gen 1, one VGA, one HDMI and two M.2 slots for various options. Powerful, expandable, and feature rich, the XH110G is the best-in-class choice for video streaming, Digital Signage, Multi-display, Surveillance applications.



FEATURES

- Supports Intel® 6th/7th Gen Core™ i, Pentium® & Celeron® processors
- Supports two independent displays
- One PCI-Ex16 slot for graphics card expansion
- Two M.2 slots for strong expansion capacity
- VESA mount included for versatile integration
- 24/7 certified in 0-50°C environments

ACCESSORIES

WLN-M

WLAN-AC / BLUETOOTH COMBO KIT

The kit includes a M.2 2230 card, two antennas and cables, supports 802.11ac/b/g/n WLAN and Bluetooth 4.0 as well.



PS01

VERTICAL STAND FOR 3-LITER PCs

The stand is designed for 3-liter slim PCs, providing maximized stability when placing the model in the vertical position.



XC60J

FANLESS 3-LITER PC WITH UP TO 8 COM PORTS

The XC60J is a 3-liter fanless PC with robust connectivity powered by energy-efficient Intel® Apollo Lake processor. The unique fanless design makes the system operation extremely quiet, energy-efficient, and reliable. With integrated Intel® HD graphics, the XC60J can support 4K UHD content playback and deliver dual displays via HDMI and VGA outs. Thanks to its built-in five COM ports, the XC60J can be extended to up to 8 COM ports to boost strong peripheral connectivity for POS, vending machine and Kiosk applications.



FANLESS



NONSTOP



COM x 8

FEATURES

- Built-in 8 COM ports to connect peripherals
- Supports two independent displays
- Supports 4K UHD playback
- Two M.2 slots for strong expansion capacity
- Fanless cooling design
- 24/7 certified in 0-40°C environments

ACCESSORIES

WLN-M

WLAN-AC / BLUETOOTH COMBO KIT

The kit includes a M.2 2230 card and two antennas with cables, which supports 802.11ac/b/g/n WLAN as well as Bluetooth 4.0.



PS01

VERTICAL STAND FOR 3-LITER PCs

The stand is designed for 3-liter slim PCs, providing maximized stability when placing the model in the vertical position.



PV02

VESA MOUNT

Designed for 3-liter slim PCs, the VESA mount allows for installation on to walls or monitors which provides space savings and the flexibility for diverse applications.





Model		XH310R/XH310RV	XH270	XH110V/XH110	XH110G	XC60J
Cooling system		Smart fan	Smart fan	Smart fan	Smart fan	Fanless
CPU		Intel® CoffeeLake LGA1151v2 socket Core i3/i5/i7/i9, Pentium, Celeron 65W processor	Intel® KabyLake/Skylake LGA1151 socket Core i3/i5/i7, Pentium, Celeron 65W processor	Intel® KabyLake/Skylake LGA1151 socket Core i3/i5/i7, Pentium, Celeron 65W processor	Intel® KabyLake/Skylake LGA1151 socket Core i3/i5/i7, Pentium, Celeron 65W processor	Intel® Celeron J3355
Chipset		Intel® H310	Intel® H270	Intel® H110	Intel® H110	Integrated in CPU
Video Engine Processor		Intel® UHD Graphics series	Intel® HD Graphics series	Intel® HD Graphics series	Intel® HD Graphics series	Intel® HD Graphics 500
Max Resolution		HDMI 4096x2160@60Hz DisplayPort 4096x2160@60Hz VGA 1920x1080@60Hz	HDMI 3840x2160@30Hz DisplayPort 4096x2160@60Hz VGA 1920x1080@60Hz	HDMI 3840x2160@30Hz DisplayPort 4096x2160@60Hz	HDMI 3840x2160@30Hz VGA 1920x1080@60Hz	HDMI 3840x2160@30Hz VGA 1920x1080@60Hz
Memory		2 x DDR4 2666/2400 MHz, Max. 32GB	2 x DDR4 2400/2133 MHz, Max. 32GB	2 x DDR3L 1600 MHz, Max. 32GB	2 x DDR4 2400/2133 MHz, Max. 32GB	2 x DDR3L 1866 MHz, Max. 8GB
Storage		1 x 2.5" HDD/SSD (max. 12.5 mm) 1 x Slim ODD (12.7 mm)	4 x 2.5" HDD/SSD (max. 12.5mm)	1 x 2.5" HDD/SSD (max. 12.5 mm) 1 x Slim ODD (12.7 mm)	1 x 2.5" HDD/SSD (max. 12.5 mm)	1 x 3.5"/2.5" HDD/SSD
Expansion Slot		1 x M.2 2280, M Key 1 x M.2 2230, E Key	1 x M.2 2280, M Key 1 x M.2 2230, E Key	1 x M.2 2280, M Key 1 x M.2 2230, E Key	1 x M.2 2280, M Key 1 x M.2 2230, E Key 1 x PCIe 3.0/2.0 x16	1 x M.2 2280, M Key 1 x M.2 2230, E Key
Video Output	HDMI Port	1 x HDMI 2.0	1 x HDMI 1.4	1 x HDMI 1.4	1 x HDMI 1.4	1 x HDMI 1.4
	DisplayPort	1	1	1	-	-
	VGA Port	1	1	Optional (PVG01)	1	1
I/O Port	USB 3.1 Gen1/Gen2 (Front)	2/-	2/-	2/-	2/-	2/-
	USB 2.0 (Front)	2	2	2	2	2
	USB 3.1 Gen1/Gen2 (Rear)	2/-	2/-	2/-	-	-
	USB 2.0 (Rear)	2	2	2	4	2
	COM Port	1 x RS232 1 x RS232/422/485, Support 5V/12V	1 x RS232	1 x RS232 1 x RS232/422/485, Support 5V/12V	-	7 x RS232 1 x RS232/422/485, Support 5V/12V
	PS/2 Port	-	-	1	-	-
	Line in/Line out/Mic in	1/2/2	1/2/2	1/2/2	-/1/1	-/1/1
Network	LAN	2 x Intel® Gigabit LAN	2 x Intel® Gigabit LAN	2 x Intel® Gigabit LAN	1 x Intel® Gigabit LAN	1 x Intel® Gigabit LAN
	Wifi	Optional (WLN-M)	Optional (WLN-M)	Optional (WLN-M)	Optional (WLN-M)	Optional (WLN-M)
VESA		Optional (PV02)	Optional (PV02)	Optional (PV02)	Bracket included	Optional (PV02)
Dimension (L/W/H) mm		241 x 200 x 72	240 x 200 x 72	240 x 200 x 72	250 x 200 x 78	238 x 200 x 72
Weight	NW (kg)	2.2	2	2.2	1.73	2.2
	GW (kg)	3.5	3.3	3.5	3.37	3.5
Certification		CB, CE, BSMI, ETL, FCC, RCM, RoHS, VCCI	CB, CE, BSMI, ETL, FCC, RCM, VCCI, RoHS	CB, CE, BSMI, ETL, FCC, RCM, RoHS	CB, CE, BSMI, ETL, FCC, RCM, VCCI, RoHS	CB, CE, BSMI, ETL, FCC, RCM, VCCI, RoHS
Operating Temperature (°C)		0~50	0~50	0~50	0~50	0~40
Chassis		Metal	Metal	Metal	Metal	Metal
Power Supply		19V/4.74A 90W external adapter	19V/6.32A 120W external adapter	19V/4.74A 90W external adapter	19.5V/9.23A 180W external adapter	19V/3.42A 65W external adapter
Operating System		Windows 10 64bit, Linux	Windows 10 64bit / 7 64bit (Skylake), Linux	Windows 10 64bit / 7 64bit (Skylake), Linux	Windows 10 64bit / 7 64bit (Skylake), Linux	Windows 10 64bit, Linux
Optional Accessories		PS01, PV02, PHD4, WLN-M, PCM31	PS01, PV02, PHD4, WLN-M	PS01, PV02, PHD4, PVG01, WLN-M	WLN-M, PS01	WLN-M, PS01, PV02



DH370

RUGGED 1-LITER 4K PC FOR POWERFUL MULTI-DISPLAY



TRIPLE 4K USB 3.1 Gen2



Shuttle DH370 puts full-fledged performance into a lightweight slim PC. Featuring up to 8 core Intel 9th Gen processors and DDR4-2666 memory, the DH370 runs even faster, more powerful and more efficient compare to previous generation. With integrated Intel® UHD graphics engine, the DH370 can deliver incredible 4K UHD content for up to three screens. The DH370 also features four USB 3.1 Gen 2 ports and other convenient connectivity interface, including four USB 3.1 Gen 1, two COM ports and two M.2 expansion slots for NVMe SSDs and a WLAN module.

FEATURES

- Supports Intel® 8/9th gen processor family
- Supports Intel® Optane™ memory technology
- Supports triple 4K UHD display via HDMI x 1 and DisplayPort x 2
- Four USB 3.1 Gen 2 for high speed transmission
- Supports Intel® CNVi module
- Dual Intel® Gigabit LAN interfaces
- 24/7 certified in 0-50°C environments

ACCESSORIES

WLN-M

WLAN-AC/BLUETOOTH COMBO KIT

The kit includes a M.2 2230 card, two antennas and cables, which supports 802.11ac/b/g/n WLAN and Bluetooth 4.0 as well.



PVG01

VGA PORT FOR XPC SLIM PCs

Compatible with Shuttle XPC slim PCs, the VGA output replaces one COM port, meaning only one COM port can be used while PVG01 is in use.



PS02

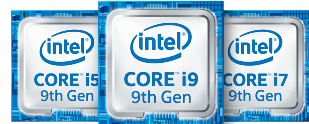
VERTICAL STAND FOR 1-LITER PCs

The stand is designed for 1-liter slim PCs, providing maximized stability when placing the model in the vertical position.

DH310V2

THE ENTRY-LEVEL 1-LITER PC WITH DUAL 4K DISPLAY SUPPORT

The DH310V2 supports the newest Intel 9th gen processors based on the LGA1151v2 socket, providing up to 6 core of processing power for smoother video playback. With HDMI 2.0a and DisplayPort built-in, users can configure dual 4K displays. The model also includes eight USB ports and two serial ports for convenient, flexible peripheral options. Measuring just 43 mm in height, there's still room for 2.5" hard drive as well as dual M.2 expansion cards and support for up to 32GB of DDR4 memory. The DH310V2 is ideal as an entry-level solution for Digital Signage, Kiosk, Office Desktop and many more.



DUAL 4K



DUAL LAN



ENVIRONMENT



FEATURES

- Supports Intel® 8/9th gen processor family
- Supports dual 4K displays via HDMI 2.0a and DisplayPort
- Two M.2, two RS232, eight USB and dual GigaLAN
- 24/7 certified in 0-50°C environments

ACCESSORIES



WLN-M

WLAN-AC/BLUETOOTH COMBO KIT

The kit includes a M.2 2230 card, two antennas and cables, which supports 802.11ac/b/g/n WLAN and Bluetooth 4.0 as well.

PVG01

VGA PORT FOR XPC SLIM PCs

Compatible with Shuttle XPC slim PCs, the VGA output replaces one COM port, meaning only one COM port can be used while PVG01 is in use.



PS02

VERTICAL STAND FOR 1-LITER PCs

The stand is designed for 1-liter slim PCs, providing maximized stability when placing the model in the vertical position.





DH02U series

1-LITER SLIM PC FOR HIGH-DEMAND PERFORMANCE

To meet the escalating high performance demands of today's digital signage market, Shuttle now is offering its first four HDMI output PC- DH02U series. With integrated 4 x HDMI 2.0, the DH02U series supports four 4K UHD displays. Equipped with exceptional NVIDIA GeForce graphics, the DH02U series delivers a breakthrough performance for real-time 4K and 3D rendering. It also provides a set of rich I/O configurations, including 2 x M.2 slots for SSD and WiFi modules, RJ45 for Gigabit LAN, as well as direct RS232 and multiple USB options.

FEATURES

- 4 processor SKUs for option- Intel® Core™ i7-7500U/i5-7200U/i3-7100U \ Celeron® 3865U
- Built-in NVIDIA GeForce® GTX 1050 4GB graphics
- Supports four 4K UHD displays via four HDMI 2.0
- Two dual channel DDR4 memory slots
- Two M.2 slots for strong expansion capacity
- VESA mount included for versatile integration
- 24/7 certified in 0-50°C environments



ACCESSORIES

WLN-M

WLAN-AC/BLUETOOTH COMBO KIT

The kit includes a M.2 2230 card and two antennas with cables, which supports 802.11ac/b/g/n WLAN as well as Bluetooth 4.0.



PS02

VERTICAL STAND FOR 1-LITER PCs

The stand is designed for 1-liter slim PCs, providing maximized stability when placing the model in the vertical position.





TRIPLE DISPLAY



SIM ADAPTER



VESA MOUNT

DL10J

FANLESS 1-LITER PC FOR IOT-BASED DIGITAL SIGNAGE

Powered by new generation of Intel® Gemini Lake Celeron® J4005 processor, the 1-liter DL10J with fanless and low power designs can support dual 4K UHD content playback for digital signage applications. With the built-in M.2 2230 expansion slot, the DL10J supports the industrial-grade SIM card functionality, which enables seamlessly 4G LTE broadband connection for commercial and IOT applications in network-critical environments.

FEATURES

- Intel® Gemini Lake low-power consumption processor
- Supports three independent displays
- Supports dual 4K UHD playback via HDMI and DisplayPort
- Supports SIM card kit for 4G LTE connectivity
- Fanless cooling design
- VESA mount included for versatile integration
- 24/7 certified in 0-40°C environments

ACCESSORIES

PS02

VERTICAL STAND FOR 1-LITER PCs

The stand is designed for 1-liter slim PCs, providing maximized stability when placing the model in the vertical position.



WWN01

4G/LTE NETWORK EXTENSION KIT

The kit includes a riser adapter card, two antennas with cables to support 4G/LTE module plus SIM card for mobile network.

- 4G/LTE module is not included





Model		DH370	DH310V2	DH310S	DH270	DH110	DH110SE	
Cooling system		Smart fan	Smart fan	Smart fan	Smart fan	Smart fan	Smart fan	
CPU		Intel® CoffeeLake LGA1151v2 socket Core i3/i5/i7/i9, Pentium, Celeron 65W processor	Intel® CoffeeLake LGA1151v2 socket Core i3/i5/i7/i9, Pentium, Celeron 65W processor	Intel® CoffeeLake LGA1151v2 socket Core i3/i5/i7/i9, Pentium, Celeron 65W processor	Intel® Kabylake/Skylake LGA1151 socket Core i3/i5/i7, Pentium, Celeron 65W processor	Intel® Kabylake/Skylake LGA1151 socket Core i3/i5/i7, Pentium, Celeron 65W processor	Intel® Kabylake/Skylake LGA1151 socket Core i3/i5/i7, Pentium, Celeron 65W processor	
Chipset		Intel® H370	Intel® H310	Intel® H310	Intel® H270	Intel® H110	Intel® H110	
Video Engine Processor		Intel® UHD Graphics series	Intel® UHD Graphics series	Intel® UHD Graphics series	Intel® HD Graphics series	Intel® HD Graphics series	Intel® HD Graphics series	
Max Resolution		HDMI 4096x2160@60Hz DisplayPort 4096x2160@60Hz	HDMI 4096x2160@60Hz DisplayPort 4096x2160@60Hz	HDMI 3840x2160@30Hz DisplayPort 4096x2160@60Hz	HDMI 4096x2160@60Hz	HDMI 3840x2160@30Hz DisplayPort 4096x2160@60Hz	HDMI 3840x2160@30Hz DisplayPort 4096x2160@60Hz	
Memory		2 x DDR4 2666/2400 MHz, Max. 32GB	2 x DDR4 2666/2400 MHz, Max. 32GB	2 x DDR4 2400 MHz, Max. 32GB	2 x DDR4 2400/2133 MHz, Max. 32GB	2 x DDR3L 1600 MHz, Max. 32GB	2 x DDR4 2400/2133 MHz, Max. 32GB	
Storage		1 x 2.5" HDD/SSD (max. 12.5 mm) 1 x SD card	1 x 2.5" HDD/SSD (max. 12.5 mm) 1 x SD card	1 x 2.5" HDD/SSD (max. 12.5 mm) 1 x SD card	1 x 2.5" HDD/SSD (max. 12.5 mm) 1 x SD card	1 x 2.5" HDD/SSD (max. 12.5 mm) 1 x SD card	1 x 2.5" HDD/SSD (max. 12.5 mm) 1 x SD card	
Expansion Slot		1 x M.2 2280, M Key 1 x M.2 2230, E Key	1 x M.2 2280, M Key 1 x M.2 2230, E Key	1 x M.2 2280, M Key 1 x M.2 2230, E Key	1 x M.2 2280, M Key 1 x M.2 2230, E Key	1 x M.2 2260, M Key 1 x M.2 2230, E Key	1 x M.2 2260, M Key 1 x M.2 2230, E Key	
Video Output	HDMI Port	1 x HDMI 2.0	1 x HDMI 2.0	1 x HDMI 1.4	1 x HDMI 2.0 , 2 x HDMI 1.4	1 x HDMI 1.4	1 x HDMI 1.4	
	DisplayPort	2	1	1	-	1	1	
	VGA Port	Optional (PVG01)	Optional (PVG01)	Optional (PVG01)	Optional (PVG01)	Optional (PVG01)	-	
I/O Port	USB 3.1 Gen1/Gen2 (Front)	2/2	2/-	2(Include Type C x 1)/-	3(Include Type C x 1)/-	2/-	2/-	
	USB 2.0 (Front)	-	2	2	-	2	2	
	USB 3.1 Gen1/Gen2 (Rear)	2/2	2/-	2/-	-	2/-	-	
	USB 2.0 (Rear)	-	2	2	4	-	4	
	COM Port	1 x RS232 1 x RS232/422/485, Support 5V/12V	1 x RS232 1 x RS232/422/485, Support 5V/12V	-	1 x RS232 1 x RS232/422/485, Support 5V/12V	1 x RS232 1 x RS232/422/485, Support 5V/12V	-	-
	PS/2 Port	-	-	-	-	1	-	
Line in/Line out/Mic in		-/1/1	-/1/1	-/1/1	-/1/1	-/1/1	-/1/1	
Network	LAN	2 x Intel® Gigabit LAN	2 x Intel® Gigabit LAN	1 x Realtek Gigabit LAN	2 x Intel® Gigabit LAN	2 x Intel® Gigabit LAN	1 x Realtek Gigabit LAN	
	Wifi	Optional (WLN-M)	Optional (WLN-M)	Optional (WLN-M)	Optional (WLN-M)	Optional (WLN-M)	Optional (WLN-M)	
VESA		Bracket included	Bracket included	Optional (PV04)	Bracket included	Bracket included	Optional (PV04)	
Dimension (L/W/H) mm		190 x 165 x 43	190 x 165 x 43	190 x 165 x 43	190 x 165 x 43	190 x 165 x 43	190 x 165 x 43	
Weight	NW (kg)	TBC	1.3	1.3	1.3	1.3	1.3	
	GW (kg)	TBC	2.05	2.05	2.05	2.05	2.05	
Certification		CB, CE, BSMI, ETL, FCC, RCM, RoHS, VCCI	CB, CE, BSMI, ETL, FCC, RCM, RoHS, VCCI	CB,CE,BSMI,ETL,FCC,RCM,RoHS, VCCI	CB, CE, BSMI, ETL, FCC, RCM, VCCI, RoHS	CB, CE, BSMI, ETL, CCC, FCC, RCM, RoHS	CB, CE, BSMI, ETL, CCC, FCC, RCM, VCCI, RoHS	
Operating Temperature (°C)		0~50	0~50	0~50	0~50	0~50	0~50	
Chassis		Metal	Metal	Metal	Metal	Metal	Metal	
Power Supply		19V/4.74A 90W external adapter	19V/4.74A 90W external adapter	19V/4.74A 90W external adapter	19V/4.74A 90W external adapter	19V/4.74A 90W external adapter	19V/4.74A 90W external adapter	
Operating System		Windows 10 64bit, Linux	Windows 10 64bit, Linux	Windows 10 64bit, Linux	Windows 10 64bit / 7 64bit (Skylake), Linux	Windows 10 64bit / 7 64bit (Skylake), Linux	Windows 10 64bit / 7 64bit (Skylake), Linux	
Optional Accessories		WLN-M, PVG01, PS02	WLN-M, PVG01, PS02	WLN-M, PVG01, PS02	WLN-M, PVG01, PS02	WLN-M, PVG01	WLN-M, PS02	



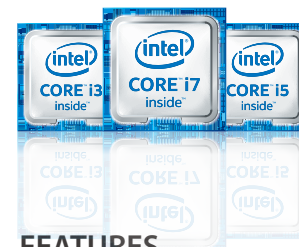
Model		DH02U series	DS10U	DS77U series	DS68U	DX30	DL10J
Cooling system		Smart fan	Fanless	Fanless	Fanless	Fanless	Fanless
CPU		Intel® Celeron 3865U or Intel® i3-7100U/i5-7200U/i7-7500U	Intel® Celeron 4205U or Intel® i3-8145U/i5-8265U/i7-8565U	Intel® Celeron 3865U or Intel® i3-7100U/i5-7200U/i7-7500U	Intel® Celeron 3855U	Intel® Celeron J3355	Intel® Celeron J4005
Chipset		Integrated in CPU	Integrated in CPU	Integrated in CPU	Integrated in CPU	Integrated in CPU	Integrated in CPU
Video Engine Processor		NVIDIA GeForce GTX 1050 GPU 4GB	Intel® HD Graphics	Intel® HD Graphics	Intel® HD Graphics	Intel® HD Graphics	Intel® HD Graphics
Max Resolution		HDMI 4096x2160@60Hz 7680x4320@60Hz in Surround Mode	HDMI 4096x2160@60Hz DisplayPort 4096x2160@60Hz	HDMI 3840x2160@30Hz DisplayPort 4096x2160@60Hz	HDMI 3840x2160@30Hz VGA 1920x1080@60Hz	HDMI 3840x2160@30Hz DisplayPort 4096x2160@60Hz	HDMI 3840x2160@30Hz DisplayPort 4096x2160@60Hz VGA 1920x1080@60Hz
Memory		2 x DDR4 2133 MHz, Max. 32GB	2 x DDR4 2400/2133 MHz, Max. 32GB	2 x DDR4 2133 MHz, Max. 32GB	2 x DDR3L 1600 MHz, Max. 32GB	2 x DDR3L 1866 MHz, Max. 8GB	2 x DDR4 2400 MHz, Max. 8GB
Storage		1 x 2.5" HDD/SSD (max. 12.5 mm)	1 x 2.5" HDD/SSD (max. 12.5 mm) 1 x SD card	1 x 2.5" HDD/SSD (max. 12.5 mm) 1 x SD card	1 x 2.5" HDD/SSD (max. 12.5 mm) 1 x SD card	1 x 2.5" HDD/SSD (max. 12.5 mm) 1 x SD card	1 x 2.5" HDD/SSD (max. 12.5 mm) 1 x SD card
Expansion Slot		1 x M.2 2280, M Key 1 x M.2 2230, E Key	1 x M.2 2280, M Key 1 x M.2 2230, E Key	1 x M.2 2280, M Key 1 x M.2 2230, E Key	1 x M.2 2280, M Key 1 x M.2 2230, E Key	1 x M.2 2280, M Key 1 x M.2 2230, E Key	1 x M.2 2280, M Key 1 x M.2 2230, E Key
Video Output	HDMI Port	4 x HDMI 2.0	1 x HDMI 2.0	2 x HDMI 1.4	1 x HDMI 1.4	1 x HDMI 1.4	1 x HDMI 1.4
	DisplayPort	-	1	1	-	1	1
	VGA Port	-	Optional (PVG01)	-	1	Optional (PVG01)	1
I/O Port	USB 3.1 Gen1/Gen2 (Front)	2/-	2(for 4205U) / 2(for Core i series)	2/-	2/-	2/-	2/-
	USB 2.0 (Front)	2	4	2	2	-	-
	USB 3.1 Gen1/Gen2 (Rear)	2/-	2(for 4205U) / 2(for Core i series)	-	-	-	-
	USB 2.0 (Rear)	-	-	2	2	4	4
	COM Port	1 x RS232	1 x RS232 1 x RS232/422/485, Support 5V/12V	1 x RS232 1 x RS232/422/485, Support 5V/12V	1 x RS232 1 x RS232/422/485, Support 5V/12V	1 x RS232 1 x RS232/422/485, Support 5V/12V	1 x RS232 1 x RS232/422/485, Support 5V/12V
	PS/2 Port	-	-	-	-	1	-
Network	LAN	1 x Intel® Gigabit LAN	2 x Intel® Gigabit LAN	2 x Intel® Gigabit LAN	2 x Intel® Gigabit LAN	1 x Intel® Gigabit LAN	1 x Intel® Gigabit LAN
	Wifi	Optional (WLN-M)	Realtek 802.11 b/g/n/ac	Realtek 802.11 b/g/n	Realtek 802.11 b/g/n	Realtek 802.11 b/g/n	Realtek 802.11 b/g/n
VESA		Bracket included	Bracket included	Bracket included	Bracket included	Bracket included	Bracket included
Dimension (L/W/H) mm		190 x 165 x 43	200 x 165 x 39.5	200 x 165 x 39.5	200 x 165 x 39.5	190 x 165 x 43	190 x 165 x 43
Weight	NW (kg)	2.2	1.4	1.3	1.4	1.5	1.5
	GW (kg)	3.5	2.1	2.05	2.1	2.07	2.07
Certification		CB, CE, BSMI, ETL, FCC, RCM, RoHS, VCCI	CB, CE, BSMI, ETL, FCC, RCM, RoHS, VCCI	CB, CE, BSMI, ETL, FCC, RCM, RoHS, VCCI, R&TTE	CB,CE,BSMI,ETL,FCC,RCM,RoHS, R&TTE, VCCI	CB, CE, BSMI, ETL, FCC, RCM, RoHS, R&TTE, VCCI	CB, CE, BSMI, ETL, FCC, RCM, RoHS, VCCI, RED
Operating Temperature (°C)		0~50	0~40	0~40	0~40	0~40	0~40
Chassis		Metal	Metal + Plastic	Metal + Plastic	Metal + Plastic	Metal	Metal
Power Supply		19V/6.32A 120W external adapter	19V/3.42A 65W external adapter	19V/3.42A 65W external adapter	19V/3.42A 65W external adapter	19V/2.1A 40W external adapter	19V/2.1A 40W external adapter
Operating System		Windows 10 64bit, Linux	Windows 10 64bit, Linux	Windows 10 64bit, Linux	Windows 10 64bit / 7 64bit (Skylake), Linux	Windows 10 64bit, Linux	Windows 10 64bit, Linux
Optional Accessories		WLN-M, PS02	PVG01	-	-	PS02, PVG01	PS02, WWN01



NC10U ^{series}

A PALM-SIZED VERSATILE 4K PC

The NC10U series is available with four different processors including Intel® Celeron® and Core™ i3/i5/i7. With just 42mm tall, the case of NC10U series can accommodate one 2.5" HDD (up to 15mm) to provide a flexible storage space. The NC10U offers a wealth of connectors and expansion slots with HDMI, DisplayPort, USB3.1 Gen1, audio and M.2 interfaces included. The NC10U is also supplied with a card reader, WLAN, Gigabit Ethernet and even a serial interface. Works with high-resolution monitors, you can use this model as your home media center, office computer or a platform for basic digital signage applications.



USB 3.1



DUAL 4K

FEATURES

- 4 processor SKUs for option- Intel® Core™ i7-8565U/ i5-8265U/ i3-8145U, Celeron® 4205U
- Supports dual independent display
- Support HDMI 2.0
- Supports dual 4K UHD playback via HDMI and DisplayPort
- Supports up to 15mm 2.5-inch Hard Drive
- VESA mount ready
- 24/7 certified in 0-40°C environments



NS02 series

FANLESS 0.5-LITER ANDROID PC FOR BASIC DIGITAL SIGNAGE

The Shuttle XPC nano NS02A/E is one of the most affordable models of Shuttle XPC family made for digital signage applications. The NS02 series is equipped with Rockchip Octa-Core 1.5 GHz processor, built-in DDR3L 2GB low-voltage memory. It not only supports Full HD playback capability but also built-in HDMI 2.0 video output is able to support 4K Ultra HD at 60Hz. In addition, the NS02E can support PoE (Power over Ethernet), allowing users easily to do on-site installation without any wire and AC adapter. The NS02 series comes with pre-installed digital signage software that user can easily manage the signage content through their own mobile devices.



FEATURES

- Supports HDMI2.0 with 4K ultra HD video output
- Supports 2.5" SATA HDD/SSD and SD card Reader
- Built-in 2G memory and 16G eMMC
- Built-in 10/100/1000 Mbps Ethernet with PoE (NS02E only)
- 802.11b/g/n and Bluetooth 4.0 combo
- Ultra SFF & 0.5L size
- Android 5.1/ 8.1



X1

ULTRA COMPACT PC FOR POWERFUL GAMEPLAY

The Shuttle X1 has a ultra-compact and stunning design powered by the Intel® Kaby Lake-H processor with NVIDIA GeForce GTX 1060 graphics to make this mini-computer capable of running VR games. Supports low voltage 1.2V DDR4-2400 dual-channel memory up to 32GB, it effectively reduces overall power consumption and delivers 4K ultra-high resolution for total immersion. This model supports 802.11ac WiFi, Bluetooth 4.2, a plenty of I/O ports of USB2.0 and USB3.0, the rear panel supports up to five independent display outputs for ultimate group play. With Intel® Optane™ Memory Technology boots the system to deliver fast, smooth, and power-efficient gaming experience.



FEATURES

- Intel® 7th Generation Core™ i7 / Core™ i5 processor
- Equipped with NVIDIA GeForce GTX 1060 3GB graphics
- Supports Intel® Optane™ memory technology
- Supports five independent displays (HDMI x 3 + DisplayPort x 1 + Type-C x 1)
- Supports M.2 2280 SSD, SATA or PCIE
- Built-in (4)USB 2.0, (4)USB 3.1 Gen 1, (1)RJ45, (1)Phone jack



www.shuttle.com

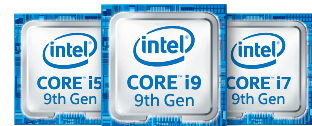


Model	NC10U	NC10U3/U5/U7	NC03U	NC03U3/U5/U7	NS02A	NS02E	X1
CPU	Intel® Celeron 4205U	Intel® Core™i3-8145U/ i5-8265U/i7-8565U	Intel® Celeron 3865U	Intel® Core™ i3-7100U/ i5-7200U/i7-7500U	Rockchip RK3368 Octa Core 1.5GHz (ARM Cortex-A53)		Intel® Core™ i5-7300HQ/i7-7700HQ
Video Engine Processor	Intel® HD Graphics 610	Intel® HD Graphics 620	Intel® HD Graphics 610	Intel® HD Graphics 620	-		NVIDIA GeForce GTX 1060 GPU 3GB
Max Resolution	HDMI 3840x2160@60Hz DisplayPort 4096x2160@60Hz		HDMI 3840x2160@30Hz DisplayPort 4096x2160@60Hz		HDMI 3840x2160@60Hz		HDMI 3840x2160@30Hz DisplayPort 4096x2160@60Hz USB Type-C 3840x2160@30Hz
Memory	2 x DDR4 2133/2400MHz, Max. 32GB		2 x DDR4 2133MHz, Max. 32GB		2GB DDR3L onboard		2 x DDR4 2400MHz, Max. 32GB
Storage	1 x 2.5" HDD/SSD (max. 15 mm) 1 x SD card		1 x 2.5" HDD/SSD (max. 15 mm) 1 x SD card		16GB eMMC onboard 1 x 2.5" HDD/SSD (max. 7 mm) 1 x SD card		1 x 2.5" HDD/SSD (max. 9.5 mm) 1 x SD card
Expansion Slot	1 x M.2 2280, M Key 1 x M.2 2230, E Key		1 x M.2 2280, M Key 1 x M.2 2230, E Key		-		1 x M.2 2280, M Key 1 x M.2 2230, E Key
Video Output	HDMI Port	1 x HDMI 2.0		1 x HDMI 1.4		1 x HDMI 2.0	
	DisplayPort	1		1		-	
I/O Port	USB 3.1 Gen1 (Front)	2 (Include Type C x 1)		2 (Include Type C x 1)		-	
	USB 2.0 (Front)	-		-		2	
	USB 3.1 Gen1(Rear)	-		-		-	
	USB 2.0 (Rear)	2		2		1	
	COM Port	1 x RS232		1 x RS232		-	
	Line in/Line out/Mic in	1		1		1	
Network	LAN	1 x Intel® Gigabit LAN		1 x Intel® Gigabit LAN		1 x Realtek Gigabit LAN	1 x Realtek Gigabit LAN (Support PoE, 802.3at)
	Wifi	Realtek 802.11 b/g/n		Realtek 802.11 b/g/n		Realtek 802.11 b/g/n Bluetooth 4.0	
VESA Mount	Bracket included		Bracket included		Bracket included		-
Stand	-		Optional (PS02)		-		-
Dimension (L/W/H) mm	141 x 141 x 42		141 x 141 x 42		141 x 141 x 29		143 x 143 x 87
Weight	NW (kg)	0.4		0.4		0.27	0.3
	GW (kg)	1.2		1.2		0.65	0.52
Certification	CB, CE, BSMI, ETL, FCC, RCM, VCCI, RoHS, R&TTE		CB, CE, BSMI, ETL, FCC, RCM, VCCI, RoHS, R&TTE		CB, CE, BSMI, ETL, FCC, RCM, VCCI, R&TTE		CE, FCC, ETL
Operating Temperature (°C)	0~50		0~50		0~40		0~35
Chassis	Plastic		Plastic		Plastic		Plastic
Power Supply	19V/3.42A 65W external adapter		19V/3.42A 65W external adapter		12V/2A 24W external adapter	Support POE (PD), 802.3at	19.5V/9.23A 180W external adapter
Operating System	Windows 10 64bit, Linux		Windows 10 64bit, Linux		Android 5.1/Android 8.1		Windows 10 64bit

SH370R8/SH310R4V2

XPC 300-SERIES SPACE-SAVING SCALABLE WORKSTATION

As the original small form factor PC maker, Shuttle offers a comprehensive line-up of mini PCs. The industry-renowned XPC cube series is only 1/3 size of a traditional tower, yet boasts impressive performance, reliability, and exclusive I.C.E 2 cooling technology, designed for almost limitless applications to meet your needs.



DUAL SLOT



TRIPLE DISPLAY



SMART FAN



SH370R8

SH370R8, the flagship model of the Shuttle XPC cube series. Ready for the 8th/9th Gen Intel Coffee Lake processors, this particular designed system features up to 8 cores of processing power for high demand tasks. With barely a volume of 14.2 liters, the SH370R8 supports up to 64GB of DDR4 memory, up to 10Gb/s transfer rate of USB 3.1 Gen 2 interfaces, four 3.5" hard drives, a large dual-slot graphics card, and a fast M.2 SATA/NVMe SSD – even stunning three 4K displays can be achieved.

FEATURES

- Supports Intel® 8th/9th Generation Processors up to 8 cores
- Supports high-end graphics cards up to 280 x 120 x 40 mm
- Three 4K display support via one HDMI 2.0a and two DisplayPort
- High speed transmission with four USB 3.1 Gen 2
- Strong scalability with one PCI-E x16, one PCI-E x4 and two M.2
- Equipped with Shuttle's exclusive I.C.E 2™ cooling engine



SH310R4V2

The SH310R4V2 is an entry-level cube PC with support for Intel's 8th/9th gen processors. Featuring up to 8 cores with integrated UHD graphics, the SH310R4V2 provides more power for demanding workflows. With HDMI, DP and VGA outputs built-in, users have more flexible options running multiple displays. Despite its seeming small cube, there is enough room to accommodate a whopping 32GB of DDR4, a fast M.2 SSD, a dual-slot graphics card, and even three storage drives. For a personal look and feel, the front panel can be customized by adding individual designs.

FEATURES

- Supports Intel® 8th/9th Generation Processors up to 8 cores
- High scalability with one PCI-E x16, one PCI-E x1, and two M.2
- Display support with HDMI 2.0a, DisplayPort and VGA outputs
- Multiple USB 3.1 gen 1 and USB 2.0 ports for connection options
- Equipped with Shuttle's exclusive I.C.E 2™ cooling engine





Model		SH370R8	SH370R6V2	SH310R4V2	SZ270R9	SZ270R8	SH110R4
CPU		Intel® CoffeeLake LGA1151v2 socket Core i3/i5/i7/i9, Pentium, Celeron 95W processor	Intel® CoffeeLake LGA1151v2 socket Core i3/i5/i7/i9, Pentium, Celeron 95W processor	Intel® CoffeeLake LGA1151v2 socket Core i3/i5/i7/i9, Pentium, Celeron 95W processor	Intel® KabyLake/Skylake LGA1151 socket Core i3/i5/i7, Pentium, Celeron 95W processor	Intel® KabyLake/Skylake LGA1151 socket Core i3/i5/i7, Pentium, Celeron 95W processor	Intel® KabyLake/Skylake LGA1151 socket Core i3/i5/i7, Pentium, Celeron 95W processor
Chipset		Intel® H370	Intel® H370	Intel® H310	Intel® Z270	Intel® Z270	Intel® H110
Video Engine Processor		Intel® UHD Graphics series	Intel® UHD Graphics series	Intel® UHD Graphics series	Intel® HD Graphic series	Intel® HD Graphic series	Intel® HD Graphic series
Max Resolution		HDMI 4096x2160@60Hz DisplayPort 4096x2160@60Hz	HDMI 4096x2160@60Hz DisplayPort 4096x2160@60Hz	HDMI 4096x2160@60Hz DisplayPort 4096x2160@60Hz VGA 1920x1200@60Hz	HDMI 3840x2160@30Hz DisplayPort 4096x2160@60Hz	HDMI 3840x2160@30Hz DisplayPort 4096x2160@60Hz	HDMI 3840x2160@30Hz DisplayPort 4096x2160@60Hz VGA 1920x1080@60Hz
Memory		4 x DDR4 2400/2666 MHz, Max. 64GB	4 x DDR4 2400/2666 MHz, Max. 64GB	2 x DDR4 2400/2666 MHz, Max. 32GB	4 x DDR4 2133/2400 MHz, Max. 64GB	4 x DDR4 2133/2400 MHz, Max. 64GB	2 x DDR4 2133 MHz, Max. 32GB
Storage		4 x 3.5" HDD	2 x 3.5" HDD 1 x 5.25" ODD Bay	2 x 3.5" HDD 1 x 5.25" ODD Bay	4 x 3.5" HDD	4 x 3.5" HDD	2 x 3.5" HDD 1 x 5.25" ODD Bay
Expansion Slot	PCI Express Slots	1 x PCI-e x16 Gen. 3.0 1 x PCI-e x4 Gen. 3.0	1 x PCI-e x16 Gen. 3.0 1 x PCI-e x4 Gen. 3.0	1 x PCI-e x16 Gen. 3.0 1 x PCI-e x1 Gen. 2.0	1 x PCI-e x16 1 x PCI-e x4	1 x PCI-e x16 1 x PCI-e x4	1 x PCI-e x16 1 x PCI-e x1
	M.2	1 x M.2 2280, M Key 1 x M.2 2230, E Key	1 x M.2 2280, M Key 1 x M.2 2230, E Key	1 x M.2 2280, M Key 1 x M.2 2230, E Key	2 x M.2 2280, M Key 1 x M.2 2230, E Key	2 x M.2 2280, M Key 1 x M.2 2230, E Key	1 x M.2 2280, M Key 1 x M.2 2230, E Key
Audio		HD 5.1 channel	HD 5.1 channel	HD 5.1 channel	HD 5.1 channel	HD 5.1 channel	HD 5.1 channel
Video Output	HDMI Port	1 x HDMI 2.0	1 x HDMI 2.0	1 x HDMI 2.0	1 x HDMI 1.4	1 x HDMI 1.4	1 x HDMI 1.4
	DisplayPort	2	2	1	2	2	1
	VGA Port	-	-	1	-	-	1
I/O Port	USB 3.1 Gen1(Front)	2	2	2	2	2	2
	USB 2.0 (Front)	-	2	-	-	-	-
	USB 3.1 Gen1/Gen2 (Rear)	2/4	2/4	2/-	4/-	4/-	2/-
	USB 2.0 (Rear)	2	2	4	4	4	4
	PS/2 Port	-	-	-	-	-	1
	Line in/Line out/Mic in	1/2/2	1/2/2	1/2/2	1/2/2	1/2/2	1/2/2
Network	LAN	1 x Intel® Gigabit LAN	2 x Intel® Gigabit LAN	1 x Intel® Gigabit LAN	2 x Intel® Gigabit LAN	2 x Intel® Gigabit LAN	1 x Intel® Gigabit LAN
	Wifi	Optional (WLN-M)	Optional (WLN-M)	Optional (WLN-M)	Optional (WLN-M)	Optional (WLN-M)	Optional (WLN-M)
Dimension (L/W/H) mm		332 x 216 x 198	332 x 216 x 198	332 x 216 x 198	332 x 216 x 198	332 x 216 x 198	325 x 215 x 198
Weight	NW (kg)	3.5	3.5	3.3	3.5	3.5	3.5
	GW (kg)	5	4.5	4.4	5	5	5
Certification		CB, CE, BSMI, ETL, FCC, RCM, RoHS, VCCI	CB, CE, BSMI, ETL, FCC, RCM, RoHS, VCCI	CB, CE, BSMI, ETL, FCC, RCM, RoHS, VCCI	CB, CE, BSMI, ETL, FCC, RCM, RoHS, VCCI	CB, CE, BSMI, ETL, FCC, RCM, RoHS, VCCI	CB, CE, BSMI, ETL, FCC, RCM, RoHS
Operating Temperature (°C)		0~40	0~40	0~40	0~40	0~40	0~40
Chassis		Aluminum	Aluminum	Aluminum	Aluminum	Aluminum	Aluminum
Power Supply		500W 80 Plus Bronze	300W 80 Plus Bronze	300W 80 Plus Bronze	500W 80 Plus Silver	500W 80 Plus Silver	300W 80 Plus Bronze
Operating System		Windows 10 64bit, Linux	Windows 10 64bit, Linux	Windows 10 64bit, Linux	Windows 10 64bit / 7 64bit (Skylake), Linux	Windows 10 64bit / 7 64bit (Skylake), Linux	Windows 10 64bit / 7 64bit (Skylake), Linux
Optional Accessories		WLN-M, PHD3, J-RS232	WLN-M, PHD3, J-RS232	WLN-M, PHD3, J-RS232	WLN-M, PHD3	WLN-M, PHD3	WLN-M, PHD3, J-RS232



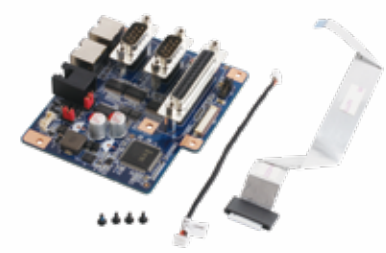
FEATURES

- 19.5" capacitive screen with 10-point multi touch
- IP54 compliant front panel
- Includes HDMI and VGA outputs for three displays
- Fanless cooling design
- 24/7 certified in 0-40°C environments

ACCESSORIES

PCL71
COM/LPT DAUGHTER BOARD

Compatible with Shuttle X50 series and P90U, it provides one RS232, one RS232/RS422/RS485 ports (both support 0V/5V/12V) and one parallel (LPT) port to the back panel.



POS01
COM/LPT/RJ11 DAUGHTER BOARD

Compatible with Shuttle X50 series and P90U, it provides an additional RJ11 type DIO Port (12V/24V) and four COM Ports: (1) RS232, (1) RS232/422/485, (1) RJ45 type RS232, (1) RJ45 type RS232/422/485. *All COM ports are 0/5/12V compatible.

P90U



FANLESS ALL-IN-ONE PC SOLUTION WITH 19.5" MULTI-TOUCH DISPLAY

The P90U is a 19.5" all-in-one PC with 10 point multi-touch functionality of capacitive type. It is equipped with an Intel® Core™ i3/i5/Celeron® processor, fanless cooling system and 16:9 touch screen, making it ideal for digital out-of-home (DOOH) solution. It provides HDMI and VGA interface to connect with additional two displays. Thanks to its IP54-rated front panel, the system achieves high dust and splash proof level. Passive cooling techniques allow the P90U to run 24/7 operation not only quiet but also virtually maintenance free.

P51U

15.6" MULTI TOUCH ALL-IN-ONE PC FOR POS, POI AND KIOSK

The 15.6" P51U all-in-one PC combines a capacitive touchscreen offering accurate, and precise 10-plus touch response, with a high-definition, 16:9 widescreen format LCD, to create a multi-touch display that meets the most demanding interactive applications. It is equipped with Intel® Core™ i3/i5/Celeron® processor and can be integrated with rich peripherals such as POS, NFC and 4G LTE module for easy integration. With the IP54 front panel and passive cooling design, the P51U runs exceptionally quiet, very robust and stable for 24/7 operation.



FEATURES

- 10-point multi-touch screen with gloves support
- IP54 compliant front panel
- Supports triple display via HDMI and VGA
- Fanless cooling design
- Flexible expansion options for diverse applications
- 24/7 certified in 0-40°C environments



ACCESSORIES

POS03 COM/RJ11 EXPANSION BOARD

The POS03 is compatible with the shuttle P51U. It features three RS232, one RS232/RS422/RS485 with 0V/5V/12V support and two USB ports for MSR and 4G dongle module.

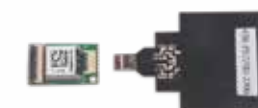


WWN02 4G/LTE ANTENNA EXTENSION KIT

The 4G/ LTE Antenna extension kit ensures superior connectivity and network quality in outdoor environment.

PNFC03 NFC EXPANSION MODULE

A NFC expansion module that is compatible with P51U without transaction function.



P20U

FANLESS 11.6" ALL-IN-ONE POS TERMINAL PC

The P20U is the new member in Shuttle XPC AIO family. It is an 11.6-inch 16:9 All-in-One touchscreen PC, powered by Intel® Celeron® 3865 dual-core processor and support triple display via built-in HDMI and VGA ports. With the IP54 compliant front panel and completely fan-less, the P20U is a very silent and stable machine for long-term operation, making it ideal for applications in any retail, self-service or hospitality environment that requires a small footprint AIO terminals or KIOSK. There are multiple expansion accessories available for option, allowing users to expand COM, RJ11, NFC or 4G/LTE function based on actual needs.



FANLESS



NONSTOP



IP54



FEATURES

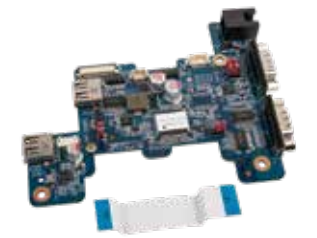
- 11.6" capacitive screen with 10-point multi touch
- IP54 compliant front panel
- Supports triple display via HDMI and VGA
- Fanless cooling design
- Multiple expansion options: COM, RJ11, NFC, 4G and Magstripe Card Reader
- Support 12V DC/voltage input
- 24/7 certified in 0-40°C environments

ACCESSORIES

POS02

COM/RJ11 EXPANSION BOARD FOR P20U

The POS02 is compatible with the Shuttle P20U. It provides three RS232, one RS232/RS422/RS485 with 0V/5V/12V support and two USB ports for MSR and 4G dongle module.



WWN02

4G/LTE EXTENSION KIT FOR P20U

The 4G extension kit ensures superior connectivity and network quality in outdoor environment.



PMSR01

MAGNETIC STRIPE READER

The PMSR01 is compatible with Shuttle P20U and can be installed and powered through USB port.



PMSR02

MAGNETIC STRIPE READER

The PMSR02 is a magnetic stripe reader supporting transaction function. It's fully compatible with Shuttle P20U and can be installed and powered through USB port.



PNFC01

NFC EXPANSION MODULE

A NFC expansion module that is compatible with P20U without transaction function.





X50V6

FANLESS 15.6" ALL-IN-ONE PC FOR POS, POI, KIOSK APPLICATIONS



FANLESS



IP54



VESA MOUNT

Shuttle X50V6 is an All-in-One PC boasting a 15.6-inch 16:9 touch screen and equipped with Intel® Celeron® 3865U dual-core processor. Thanks to the completely passive cooling, the machine is virtually silent, maintenance-free and suitable for continuous 24/7 operation. The model provides a HDMI and a VGA interface which can be used to drive two more displays for basic digital signage applications. With an optional accessory PCL71 accessory or a POS01 accessory, users can easily upgrade the device with additional COM, LPT, and DIO ports. In addition to support standard 19V, the machine also supports 12V voltage input designed for easily connected to automotive and industrial applications.



FEATURES

- IP54 compliant front panel
- Supports triple display via HDMI and VGA
- Two dual channel DDR4-2133 memory slots
- Fanless cooling design
- Two expansion options: RS232 and Parallel expansion card
- 24/7 certified in 0-40°C environments

ACCESSORIES

PCL71

COM/LPT DAUGHTER BOARD

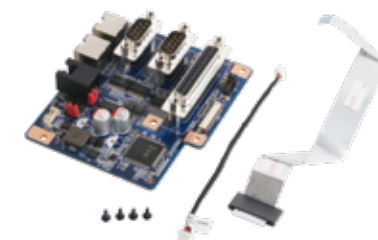
Compatible with Shuttle X50 series and P90U, it provides one RS232, one RS232/RS422/RS485 ports (both support 0V/5V/12V) and one parallel (LPT) port to the back panel.



POS01

COM/LPT/RJ11 DAUGHTER BOARD

Compatible with Shuttle X50 series and P90U, it provides an additional RJ11 type DIO Port (12V/24V) and four COM Ports: (1) RS232, (1) RS232/422/485, (1) RJ45 type RS232, (1) RJ45 type RS232/422/485. *All COM ports are 0/5/12V compatible.





Model		P90U	P51U	P20U	X50V6
Color		Black/White	Black/White	Black	Black / White
Screen		19.5" LCD (16:9, 1600x900) Multi touch	15.6" LCD (16:9, 1920x1080) Multi touch	11.6" LCD (16:9, 1366x768) Multi touch	15.6" LCD (16:9, 1366x768) Single touch
CPU		Intel® Celeron 3865U	Intel® Celeron 4205U	Intel® Celeron 3865U	Intel® Celeron 3865U
Video Engine Processor		Intel® HD Graphics 610	Intel® HD Graphics	Intel® HD Graphics 610	Intel® HD Graphics 610
Max Resolution		HDMI 4096x2304@30Hz VGA 1920x1080@60Hz	HDMI 4096x2304@30Hz VGA 1920x1080@60Hz	HDMI 3840x2160@30Hz VGA 1920x1080@60Hz	HDMI 3840x2160@30Hz VGA 1920x1080@60Hz
Memory		2 x DDR4 2133 MHz, Max. 32GB	2 x DDR4 2400 MHz, Max. 32GB	2 x DDR4 2133 MHz, Max. 32GB	2 x DDR4 2133 MHz, Max. 32GB
Storage		1 x 2.5" HDD/SSD (max. 9.5 mm) 1 x SD card	1 x 2.5" HDD/SSD (max. 9.5 mm) 1 x SD card	1 x 2.5" HDD/SSD (max. 9.5 mm) 1 x SD card	1 x 2.5" HDD/SSD (max. 9.5 mm) 1 x SD card
Expansion Slot		1 x M.2 2242/2260/2280, M Key 1 x M.2 2230, E Key	1 x M.2 2280, B/M Key 1 x M.2 2230, E Key	1 x M.2 2242/2260/2280, M Key 1 x M.2 2230, E Key	1 x M.2 2242/2260/2280, M Key 1 x M.2 2230, E Key
Video Output	HDMI Port	1 x HDMI 1.4	1 x HDMI 1.4	1 x HDMI 1.4	1 x HDMI 1.4
	VGA Port	1	1	1	1
I/O Port	USB 3.1 Gen1 (Bottom)	2	2	2	2
	USB 3.1 Gen1 (Side)	NA	2	NA	NA
	USB 2.0 (Bottom)	2	2	2	2
	USB 2.0 (Side)	2	NA	2	2
	COM Port	Optional (PCL71 / POS01)	2 x RS232 (Max. 4)	2 x RS232 (Max. 4)	Optional (PCL71 / POS01)
	Line out/Mic in	1/1	1/1	1/1	1/1
Network	LAN	1 x Intel® Gigabit LAN	1 x Intel® Gigabit LAN	1 x Intel® Gigabit LAN	1 x Intel® Gigabit LAN
	Wifi	Realtek 802.11 a/b/g/n/ac Bluetooth 4.1	Realtek 802.11 a/b/g/n/ac Bluetooth 4.2	Realtek 802.11 b/g/n Bluetooth 4.1	Realtek 802.11 b/g/n
Communication	Webcam	2M FHD	2M FHD	2M FHD	2M FHD
	Microphone	Capacitor	Capacitor	Capacitor	Capacitor
	Speaker	2 x 2W	2 x 2W	1 x 2W	2 x 2W
VESA Mount		Support 100 x 100 mm	Support 100 x 100 mm	Support 100 x 100 mm	Support 100 x 100 mm
Dimension (L/W/H) mm		487 x 321 x 44	393.6 x 272.5 x 39.8	299 x 203 x 50	391.3 x 327 x 42
Weight	NW (kg)	4.29	3.25	2.47	2.92
	GW (kg)	5.62	4.5	3.39	4.2
Certification		CB,BSMI, CE, ETL,CEC, FCC, VCCI, RCM	CB,BSMI, CE, ETL,CEC,FCC, VCCI, RCM	CB, CE, ETL, FCC, VCCI, RCM, BSMI, EAC, FAC	CB, CE, BSMI, R&TTE, ETL, FCC, RCM, RoHS, VCCI
Operating Temperature (°C)		0~40	0~40	0~40	0~40
Adapter		19V/3.42A 65W external adapter	19V/3.42A 65W external adapter	19V/3.42A 65W external adapter	19V/3.42A 65W external adapter
Battery		NA	4 Cell/30.24Wh (option)	NA	NA
Operating System		Windows 10 64bit, Linux	Windows 10 64bit, Linux	Windows 10 64bit, Linux	Windows 10 64bit, Linux
Optional Accessories		PCL71, POS01, WWN02, PNFC02	POS03, WWN02, PNFC03	POS02, WWN02, PMSR01, PMSR02, PNFC01	PCL71, POS01
Others		Front Panel IP54	Front Panel IP54	Front Panel IP54	Front Panel IP54

NC03B

AN EASY AND AFFORDABLE STREAMING BOX FOR PCS, CONSOLES, AND MORE!

Shuttle's new NC03B blends speeding performance with optimized live streaming software in a sleek, yet compact design. The mini streaming box powered by an Intel® Core™ processor combines superb calculating power with a 1080 video capture functionality and capture-friendly I/Os, making it easier and time-saving for users to build a stable and powerful live streaming PC to create interesting and talented online show.



HDMI INPUT



DUAL DISPLAY



VIDEO CAPTURE



FEATURES

- 7th Gen Intel Core i5/ i7 processor
- 1080p resolution at 60FPS
- Dual monitors support
- Sleek yet compact design- 141*141*29 mm



Model	NC03B	
CPU	Intel® Core™ i5-7200U/i7-7500U	
Video Engine Processor	Intel® HD Graphics 620	
Video Capability	4K	
Max Resolution	HDMI 3840x2160@30Hz DisplayPort 4096x2160@60Hz	
Memory	8G(4Gx2) SO-DIMM DDR4	
Storage	128GB M.2 SSD	
Video Output	HDMI Port	1
	DisplayPort	1
	VGA Port	-
Video Capture	Video Input	HDMI x 1
	Max. Input Resolution	1920x1200@60FPS
	Max. Capturing Resolution	1920x1200@60FPS
	Recording Format	H.264
I/O Port	USB 3.1 Gen1/Gen2 (Front)	2(Include Type C x 1)/-
	USB 2.0 (Front)	-
	USB 3.1 Gen1/Gen2 (Rear)	-
	USB 2.0 (Rear)	2
	COM Port	-
	DC in	1
	Headphone+Mic	1x combo jack 3.5mm
Network	LAN	1 x Intel® Gigabit LAN
VESA	Bracket included	
Dimension (L/W/H) mm	142(L) x 142(W) x 42(H) mm	
Weight	NW (kg)	0.4
	GW (kg)	1.2
Certification	CB, CE, BSMI, ETL, FCC, RCM, VCCI, RoHS	
Operating Temperature (°C)	0~40	
Chassis	Plastic	
Power Supply	19V/3.42A 65W external adapter	
Operating System	Windows 10home 64bit	

ACCESSORY LIST

Item	Description	Compatible with
J-RS232	1x COM expansion	SH110R4, SH310R4, SH310R4V2, SH370R6, SH370R6V2, SH370R8, SZ170R8, SZ170R8V2, XH110, XH110V
PC61J	300 W power supply 80+	SH110R4, SH170R6
PC63J	500 W power supply 80+	SH110R4, SH170R6, SZ170R8, SZ170R8V2
PCL71	2x COM, 1x LPT expansion	P90U, X50V5, X50V6
PHD3	2.5" HDD/SSD expansion frame	SH110R4, SH310R4, SH310R4V2, SH370R6, SH370R6V2, SH370R8, SZ170R8, SZ170R8V2, SZ270R8, SZ270R9, XH170R6
PHD4	3.5" HDD expansion frame	XH110, XH110V, XH170V, XH270, XH310, XH310V, XH310R, XH310RV
PHD5	2.5" HDD/SSD expansion frame	NS02A, NS02E
PMSR01	Magnetic Stripe Swipe Reader without transaction function	P20U
PMSR02	Magnetic Stripe Swipe Reader with transaction function	P20U
PNFC01	NFC module	P20U
PNFC02	NFC module	P90U
PNFC03	NFC module	P51U
POS01	4x COM, 1x LPT, 1x DIO expansion	P90U, X50V5, X50V6
POS02	2x USB2.0, 1x RJ11, 4x COM (COM3 support RS232/422/485 0V,5V,12V) expansion	P20U
POS03	2x USB2.0, 1x RJ11, 4x COM (COM3 support RS232/422/485 0V,5V,12V) expansion	P51U
PS01	Vertical stand	XC60J, XH110, XH110G, XH110V, XH170V, XH270, XH310, XH310V, XH310R, XH310RV
PS02	Vertical stand	DH02U-series, DH110, DH110SE, DH170, DH270, DH310, DH310S, DH310V2, DH370, DQ170, DL10J, DX30, NC03U-Series
PV02	VESA kit	XC60J, XH110, XH110V, XH110G, XH170V, XH270, XH310, XH310V, XH310R, XH310RV
PV05	VESA kit	NS02A, NS02E
PVG01	VGA adapter	DH110, DH170, DH270, DH310, DH310S, DH310V2, DH370, DQ170, DX30, XH110, XH110V
WLN-M	Wi-Fi expansion	DH02U-series, DH110, DH110SE, DH270, DH310, DH310S, DH310V2, DH370, DX30, SH110R4, SH310R4, SH310R4V2, SH370R6, SH370R6V2, SH370R8, SZ170R8, SZ170R8V2, SZ270R8, SZ270R9, NC02U-Series, NC03U-Series, XC60J, XH110G, XH110, XH110V, XH170V, XH270, XH310, XH310V, XH310R, XH310RV
WLN-P	Wi-Fi expansion	DH170, DQ170, SH170R6, SH170R8, XH170V
WWN01	4G / LTE connection module	DL10J
WWN02	4G / LTE antenna set	P20U, P51U, P90U
WWN03	4G / LTE antenna set	DS10U